

SECTION NOTES

- ① THE LOT NUMBER IS PLACED IN THE UPPER RIGHT HAND CORNER OF THE LOT AS YOU FACE THE LOT AND IS INDICATED AS A SLASH OR TICK MARK.
 - ② THE LOCATION OF GRAVE MARKERS ARE SHOWN BELOW WITH ARROW INDICATING DIRECTION GRAVE MARKERS WILL FACE.
-
- ③ ALL LOTS ARE 2-GRAVE LOTS UNLESS OTHERWISE NOTED ON THE DRAWING.
 - ④ ALL 2-GRAVE LOTS ARE 6'-4" X 10.0'
ALL 3-GRAVE LOTS ARE 9'-6" X 10.0'

LEGEND

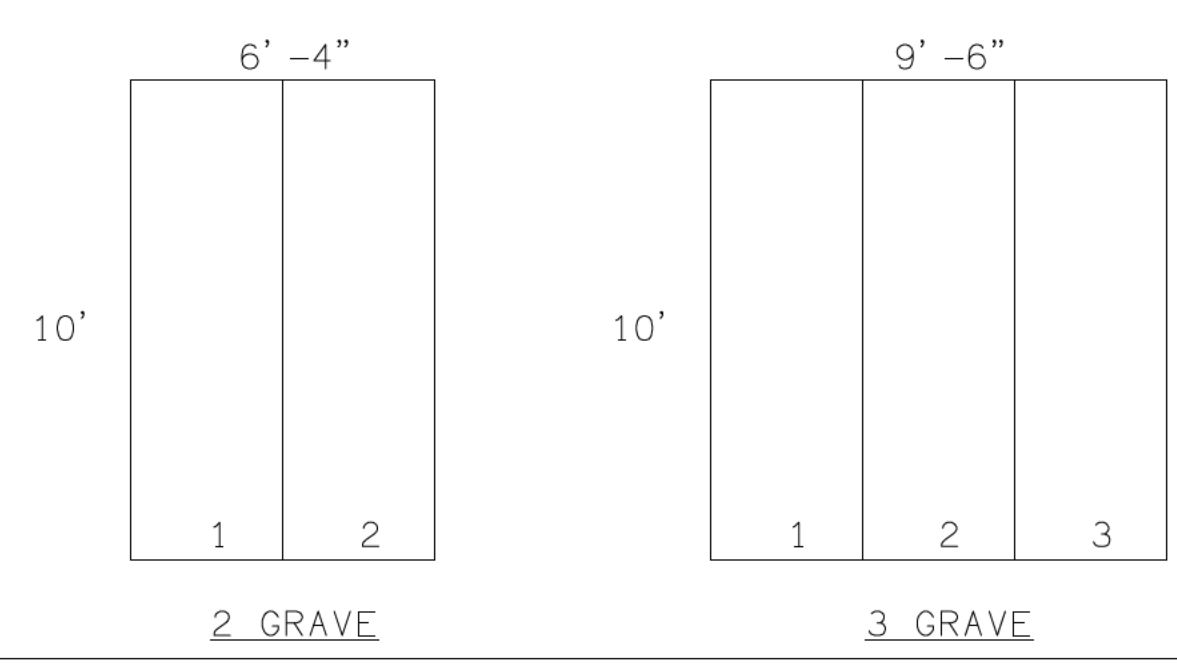
- 3675 PREMIUM FEATURE LOT
- 3875 FEATURE LOT
- 4075 TREE / LANDSCAPE LOCATIONS
- 3GR 3880 3 GRAVE LOT
- 288 488 FLUSH MARKERS ONLY
- 205 28"-36" MONUMENTS
- 3305 28"-42" MONUMENTS
- 2733 28"-60" MONUMENTS
- 1904 28"-72" MONUMENTS
- 2856 PILLOW MARKERS

MONUMENT NOTES

- ① MONUMENT LOTS ARE RESTRICTED TO THOSE AS SHOWN ON SECTION MAP.
- ② ALL MONUMENT LOTS ARE EITHER 2-GRAVE OR 3-GRAVE LOTS OTHER CONFIGURATIONS WILL BE DETERMINED AS REQUESTED.
- ③ HEIGHT OF MONUMENTS ON DESIGNATED MONUMENT LOTS CAN VARY DEPENDING ON NUMBER OF GRAVES ASSOCIATED WITH MONUMENT REQUESTED.
- ④ ALL FOUNDATIONS ARE LOCATED WITHIN LOTS.

LOT SUMMARY

48	1-GRAVE LOTS
3585	2-GRAVE LOTS
125	3-GRAVE LOTS
0	2-GRAVE PREMIUM FEATURE LOTS
0	3-GRAVE PREMIUM FEATURE LOTS
24	2-GRAVE FEATURE LOTS
4	3-GRAVE FEATURE LOTS
3810	TOTAL LOTS
7653	TOTAL GRAVES



No.	DATE	REVISION

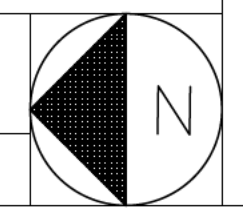
OFFICE OF DEVELOPMENT
Catholic Cemeteries Association
10000 Miles Ave. Cleveland, Ohio
44105
216.641.7575
FAX: 216.641.0212

All Souls Cemetery - Chardon, Ohio
Section 12
Whole Section

SHEET NAME:
DATE: 10.30.2015
PROJECT No.:

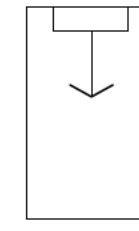
A1 SECTION 12 - WHOLE SECTION

1"=40'



SECTION NOTES

- ① THE LOT NUMBER IS PLACED IN THE UPPER RIGHT HAND CORNER OF THE LOT AS YOU FACE THE LOT AND IS INDICATED AS A SLASH OR TICK MARK.
- ② THE LOCATION OF GRAVE MARKERS ARE SHOWN BELOW WITH ARROW INDICATING DIRECTION GRAVE MARKERS WILL FACE.
- ③ ALL LOTS ARE 2-GRAVE LOTS UNLESS OTHERWISE NOTED ON THE DRAWING.
- ④ ALL 2-GRAVE LOTS ARE 6'-4" X 10.0'
ALL 3-GRAVE LOTS ARE 9'-6" X 10.0'



LEGEND

- PREMIUM FEATURE LOT
- FEATURE LOT
- TREE / LANDSCAPE LOCATIONS
- 3 GRAVE LOT
- 288 488 FLUSH MARKERS ONLY
- 205 28"-36" MONUMENTS
- 3305 28"-42" MONUMENTS
- 2733 28"-60" MONUMENTS
- 1904 28"-72" MONUMENTS
- 2856 PILLOW MARKERS

MONUMENT NOTES

- ① MONUMENT LOTS ARE RESTRICTED TO THOSE AS SHOWN ON SECTION MAP.
- ② ALL MONUMENT LOTS ARE EITHER 2-GRAVE OR 3-GRAVE LOTS OTHER CONFIGURATIONS WILL BE DETERMINED AS REQUESTED.
- ③ HEIGHT OF MONUMENTS ON DESIGNATED MONUMENT LOTS CAN VARY DEPENDING ON NUMBER OF GRAVES ASSOCIATED WITH MONUMENT REQUESTED.
- ④ ALL FOUNDATIONS ARE LOCATED WITHIN LOTS.

LOT SUMMARY

15	1-GRAVE LOTS
1065	2-GRAVE LOTS
40	3-GRAVE LOTS
0	2-GRAVE PREMIUM FEATURE LOTS
0	3-GRAVE PREMIUM FEATURE LOTS
8	2-GRAVE FEATURE LOTS
1	3-GRAVE FEATURE LOTS
1129	TOTAL LOTS
2284	TOTAL GRAVES

All Souls Cemetery - Chardon, Ohio
Section 12 North

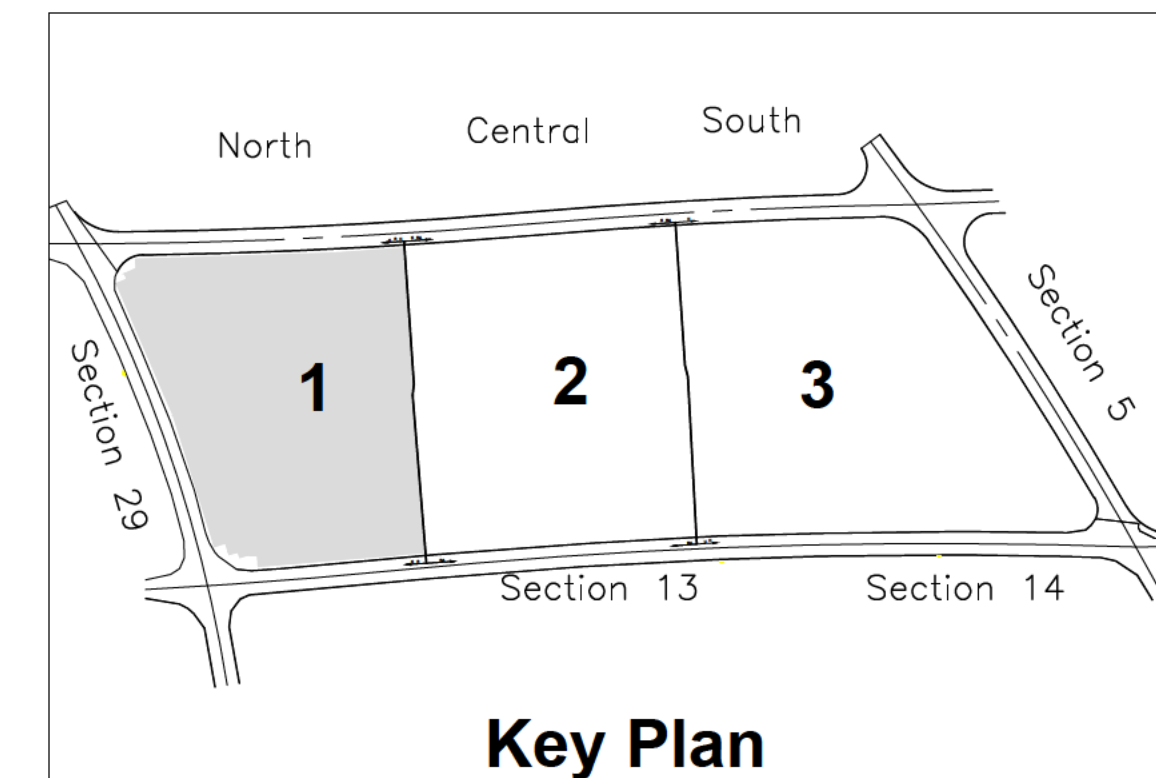
SHEET NAME:

DATE: 10.30.2015

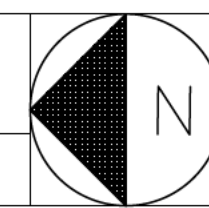
PROJECT No.:

No. DATE REVISION

OFFICE OF DEVELOPMENT
Catholic Cemeteries Association
10000 Miles Ave. Cleveland, Ohio
44105
216.641.7575
FAX: 216.641.0212

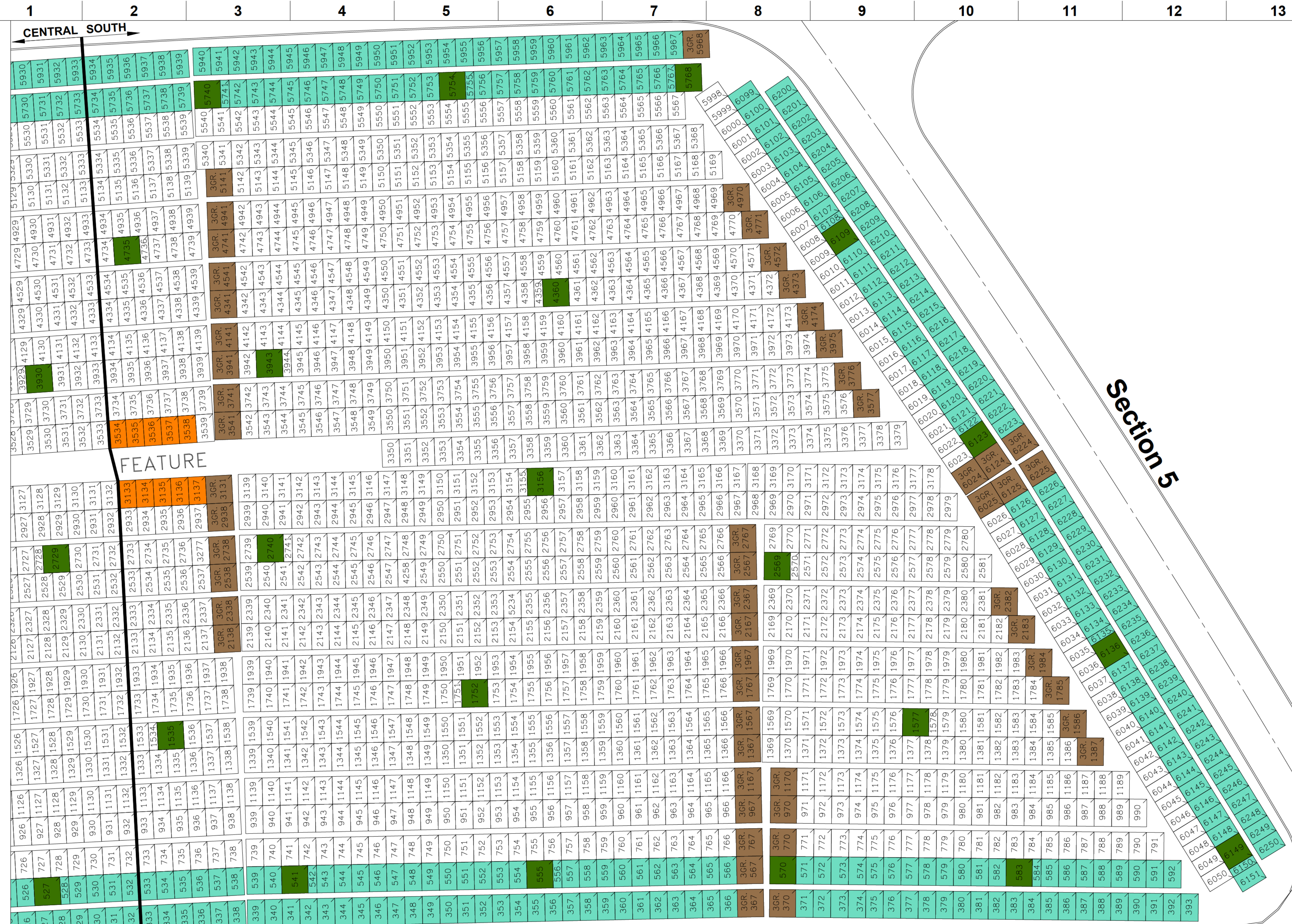


Key Plan



A1 SECTION 12 - NORTH

1"=20'



SECTION NOTES

- 1 THE LOT NUMBER IS PLACED IN THE UPPER RIGHT HAND CORNER OF THE LOT AS YOU FACE THE LOT AND IS INDICATED AS A SLASH OR TICK MARK.
- 2 THE LOCATION OF GRAVE MARKERS ARE SHOWN BELOW WITH ARROW INDICATING DIRECTION GRAVE MARKERS WILL FACE.
- 3 ALL LOTS ARE 2-GRAVE LOTS UNLESS OTHERWISE NOTED ON THE DRAWING.
- 4 ALL 2-GRAVE LOTS ARE 6'-4" X 10.0'
ALL 3-GRAVE LOTS ARE 9'-6" X 10.0'

LEGEND

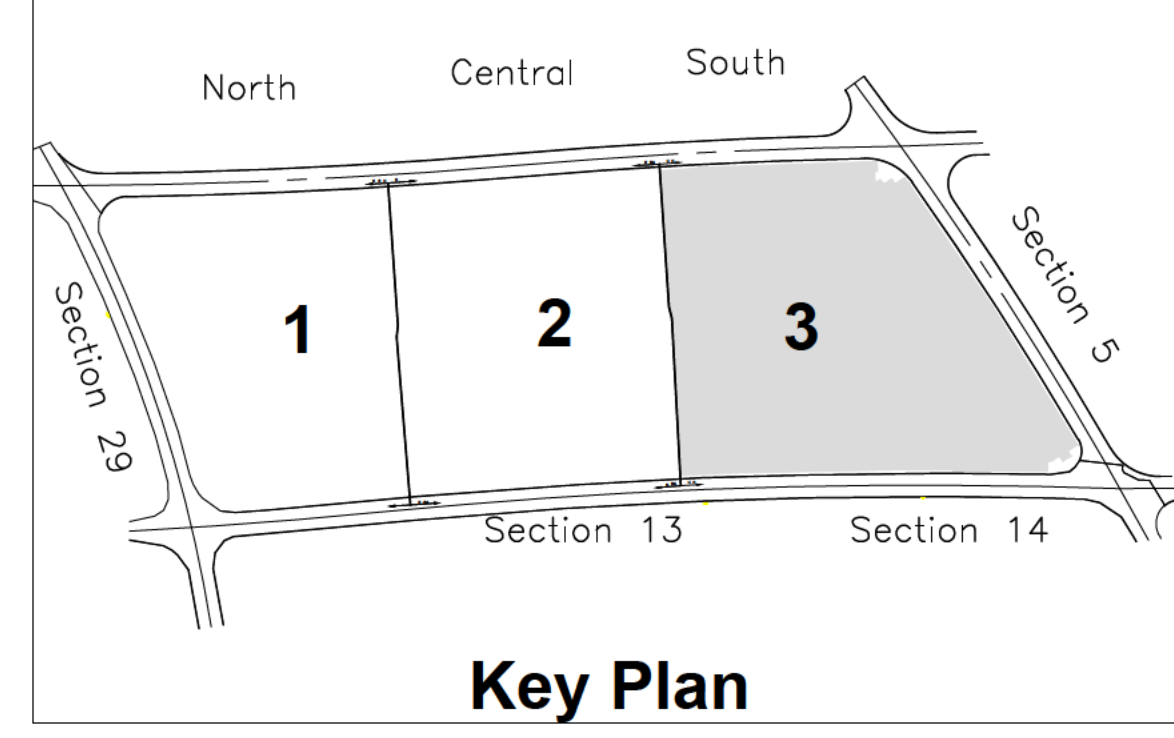
- PREMIUM FEATURE LOT
- FEATURE LOT
- TREE / LANDSCAPE LOCATIONS
- 3 GRAVE LOT
- 288 488 FLUSH MARKERS ONLY
- 205 28"-36" MONUMENTS
- 3305 28"-42" MONUMENTS
- 2733 28"-60" MONUMENTS
- 1904 28"-72" MONUMENTS
- 2856 PILLOW MARKERS

MONUMENT NOTES

- 1 MONUMENT LOTS ARE RESTRICTED TO THOSE AS SHOWN ON SECTION MAP.
- 2 ALL MONUMENT LOTS ARE EITHER 2-GRAVE OR 3-GRAVE LOTS OTHER CONFIGURATIONS WILL BE DETERMINED AS REQUESTED.
- 3 HEIGHT OF MONUMENTS ON DESIGNATED MONUMENT LOTS CAN VARY DEPENDING ON NUMBER OF GRAVES ASSOCIATED WITH MONUMENT REQUESTED.
- 4 ALL FOUNDATIONS ARE LOCATED WITHIN LOTS.

LOT SUMMARY

19	1-GRAVE LOTS
1357	2-GRAVE LOTS
53	3-GRAVE LOTS
0	2-GRAVE PREMIUM FEATURE LOTS
0	3-GRAVE PREMIUM FEATURE LOTS
10	2-GRAVE FEATURE LOTS
0	3-GRAVE FEATURE LOTS
1439	TOTAL LOTS
2912	TOTAL GRAVES



Section 14

OFFICE OF DEVELOPMENT
Catholic Cemeteries Association
10000 Miles Ave. Cleveland, Ohio
44105
216.641.7575
FAX: 216.641.0212

**All Souls Cemetery - Chardon, Ohio
Section 12
South**

SHEET NAME:
DATE: 10.30.2015
PROJECT No.:

A1 SECTION 12 - SOUTH

1"=20'

