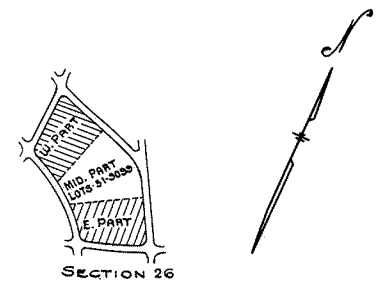


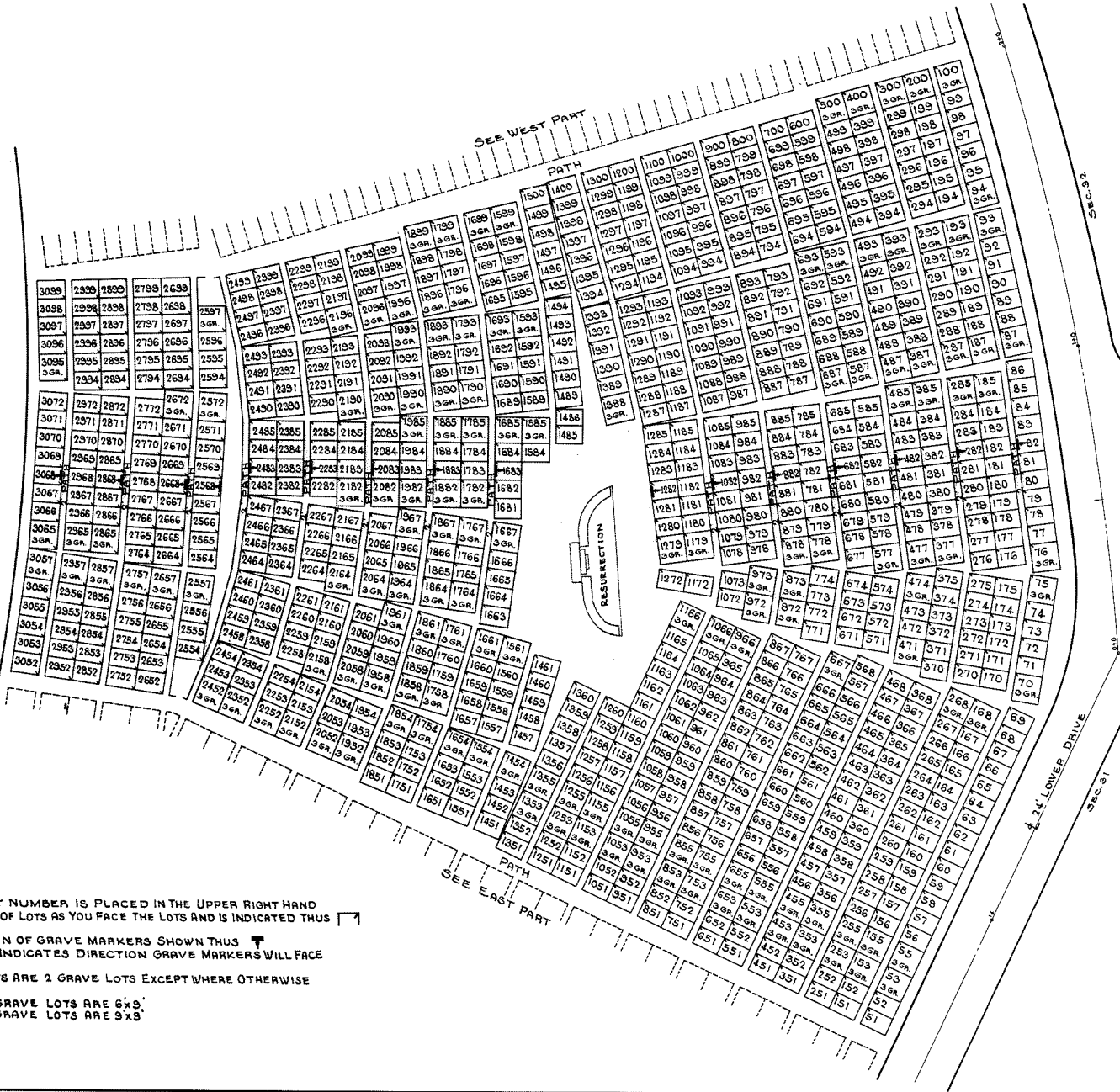
NOTE:  
 THE LOT NUMBER IS PLACED IN THE UPPER  
 RIGHT HAND CORNER OF LOTS AS YOU FACE  
 THE LOTS AND IS INDICATED THUS   
 LOCATION OF GRAVE MARKERS SHOWN THUS   
 ARROW INDICATES DIRECTION GRAVE MARKERS  
 WILL FACE.  
 ALL LOTS ARE 2 GRAVE LOTS EXCEPT WHERE  
 OTHERWISE NOTED.  
 ALL 2 GRAVE LOTS ARE 6'x9'  
 ALL 3 GRAVE LOTS ARE 9'x9'

LOT SUMMARY  
 656 2 GR. LOTS  
 97 3 GR. LOTS  
 753 TOTAL LOTS

ALL SOULS CEMETERY  
 EAST PART  
**SECTION 26**  
 SCALE 1"=20' G.C.A. MAY, 1958



SECTION 26



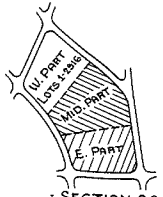
NOTE:  
 THE LOT NUMBER IS PLACED IN THE UPPER RIGHT HAND  
 CORNER OF LOTS AS YOU FACE THE LOTS AND IS INDICATED THUS [ ]

LOCATION OF GRAVE MARKERS SHOWN THUS [ ]  
 ARROW INDICATES DIRECTION GRAVE MARKERS WILL FACE

ALL LOTS ARE 2 GRAVE LOTS EXCEPT WHERE OTHERWISE  
 NOTED.  
 ALL 2 GRAVE LOTS ARE 6x3'  
 ALL 3 GRAVE LOTS ARE 9x3'

LOT SUMMARY  
 817 2 GR. LOTS  
 147 3 GR. LOTS  
 964 TOTAL LOTS

**ALL SOULS CEMETERY**  
 MIDDLE PART  
**SECTION 26**  
 SCALE 1" = 20' G.C.A. MAY, 1958  
 Rev. 0 2/10/60 Rev. 0 7/20/60



SECTION 26



NOTE:  
 THE LOT NUMBER IS PLACED IN THE UPPER RIGHT HAND CORNER OF LOTS AS YOU FACE THE LOTS AND IS INDICATED THUS [ ]

LOCATION OF GRAVE MARKERS SHOWN THUS [ ]  
 ARROW INDICATES DIRECTION GRAVE MARKERS WILL FACE

BURIAL CLASSIFICATIONS  
 LOTS 1-48 RESERVED FOR FETUS BURIALS (10'x30'GR.) UNCONSECATED  
 LOTS 51-486 " " FOR BABIES (2'x5'GR.) UNCONSECATED  
 LOTS 501-547 " " FOR LIMBS (10'x30'GR.) CONSECRATED  
 LOTS 551-2916 " " FOR BABIES (2'x5'GR.) CONSECRATED

LOT SUMMARY  
 46 LOTS (1-48) ARE 10 GRAVE LOTS (2.5'x10')  
 28 LOTS (501-547) ARE 20 GRAVE LOTS (5'x10')  
 ALL OTHER LOTS ARE 5 GRAVE LOTS (5'x10')

ALL SOULS CEMETERY  
 WEST PART  
**SECTION 26B**

REV. 1-19-83  
 REV. 4-12-82

SCALE 1"=20' G.C.A APRIL, 1958

FINAL 6-25-58

26  
 W.F.