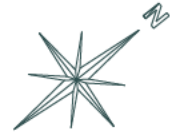
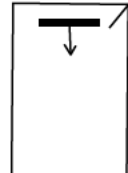


SEE SECTION 35 (NORTHWEST)



THE LOT NUMBER IS PLACED AT THE UPPER RIGHT HAND CORNER OF THE LOT AS YOU FACE THE LOT AND IS INDICATED AS A SLASH OR TICK MARK.

THE LOCATION OF THE GRAVE MARKERS ARE SHOWN BELOW WITH ARROW INDICATING THE DIRECTION THE GRAVE MARKER WILL FACE.



All lots are 1-Grave Lots at O.D. (Ordinary Depth) unless noted otherwise.

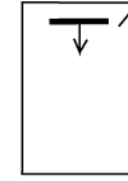
All 1-Grave Lots are 3'-0" x 9'-0"

All Souls Cemetery
Chardon, Ohio
SECTION 35
NORTHEAST

Scale: 1" = 30' December, 2017
 J Bischof

THE LOT NUMBER IS PLACED AT THE UPPER RIGHT HAND CORNER OF THE LOT AS YOU FACE THE LOT AND IS INDICATED AS A SLASH OR TICK MARK.

THE LOCATION OF THE GRAVE MARKERS ARE SHOWN BELOW WITH ARROW INDICATING THE DIRECTION THE GRAVE MARKER WILL FACE.



All lots are 1-Grave Lots at O.D. (Ordinary Depth) unless noted otherwise.

All 1-Grave Lots are 3'-0" x 9'-0"

ELEVATION NICHE #2000

ELEVATION NICHE #3000

ELEVATION NICHE #4000

BRIDGE

3' x 3' CREMATION LOTS

Walkway

Walkway

Walkway

Walkway

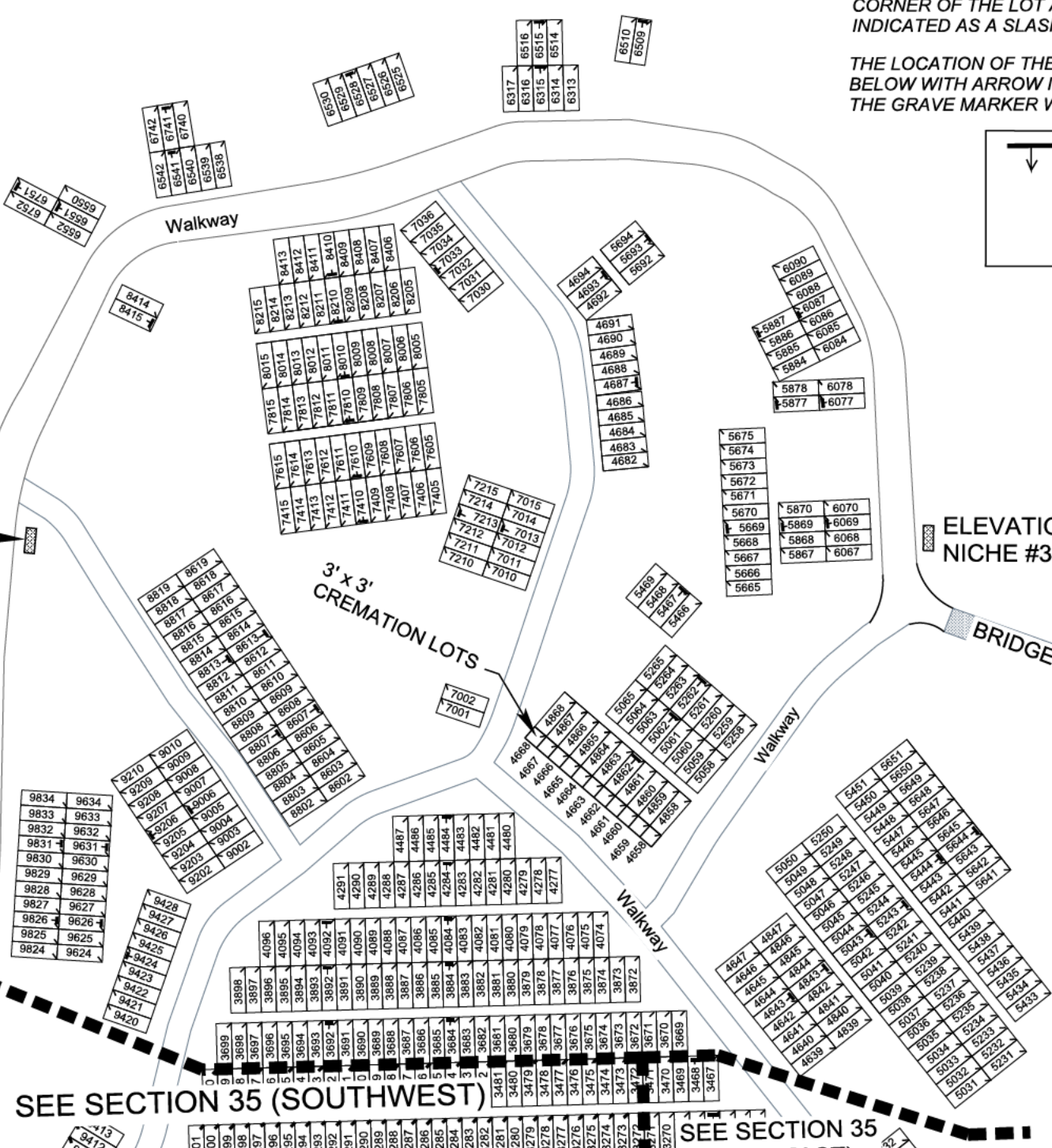
SEE SECTION 35 (SOUTHWEST)

SEE SECTION 35 (NORTHEAST)

**All Souls Cemetery
Chardon, Ohio
SECTION 35
NORTHWEST**

Scale: 1" = 30' December, 2017

J Bischof

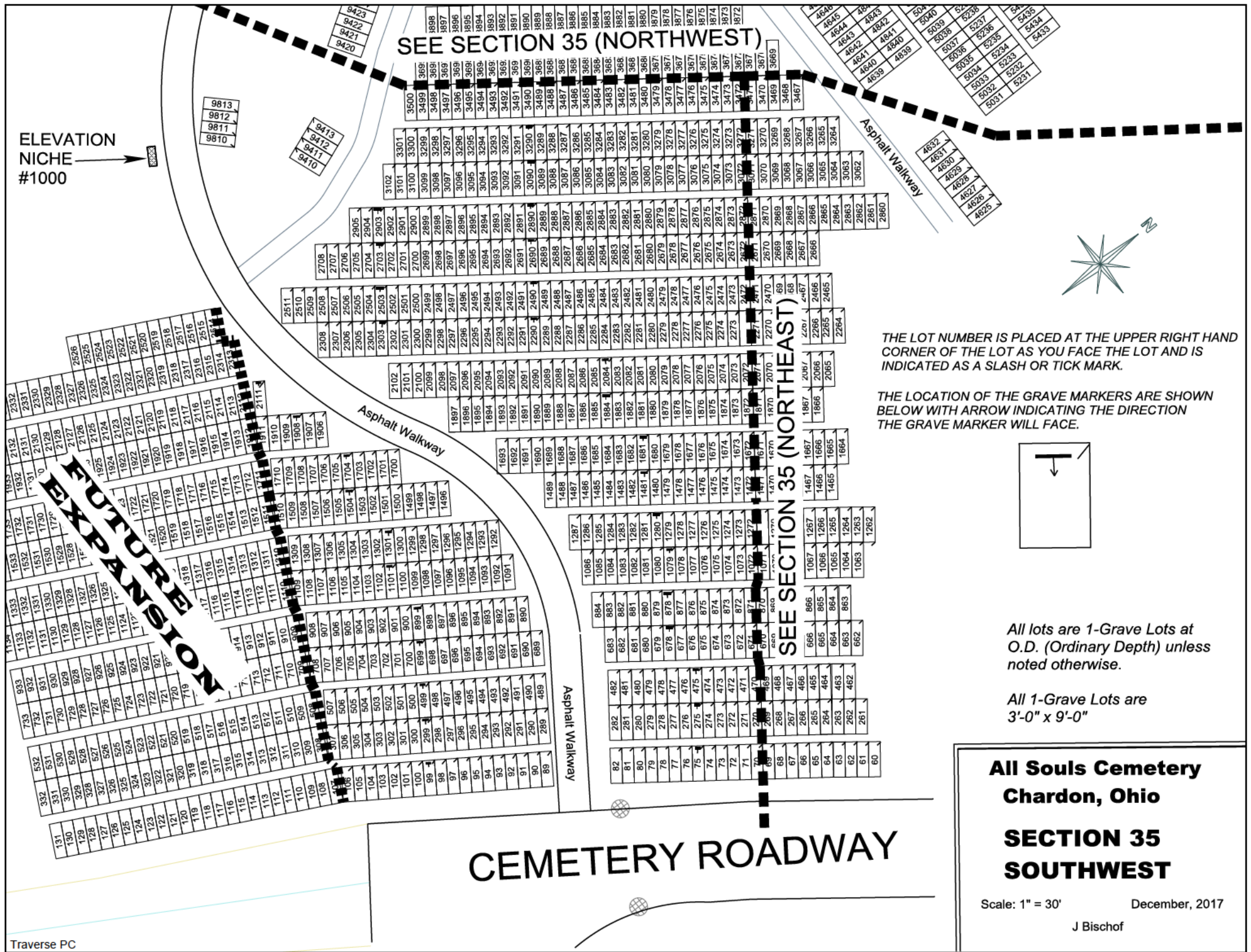


ELEVATION
NICHE
#1000

SEE SECTION 35 (NORTHWEST)

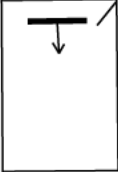
SEE SECTION 35 (NORTHEAST)

CEMETERY ROADWAY



THE LOT NUMBER IS PLACED AT THE UPPER RIGHT HAND CORNER OF THE LOT AS YOU FACE THE LOT AND IS INDICATED AS A SLASH OR TICK MARK.

THE LOCATION OF THE GRAVE MARKERS ARE SHOWN BELOW WITH ARROW INDICATING THE DIRECTION THE GRAVE MARKER WILL FACE.



All lots are 1-Grave Lots at O.D. (Ordinary Depth) unless noted otherwise.

All 1-Grave Lots are 3'-0" x 9'-0"

All Souls Cemetery
Chardon, Ohio
SECTION 35
SOUTHWEST

Scale: 1" = 30' December, 2017

J Bischof