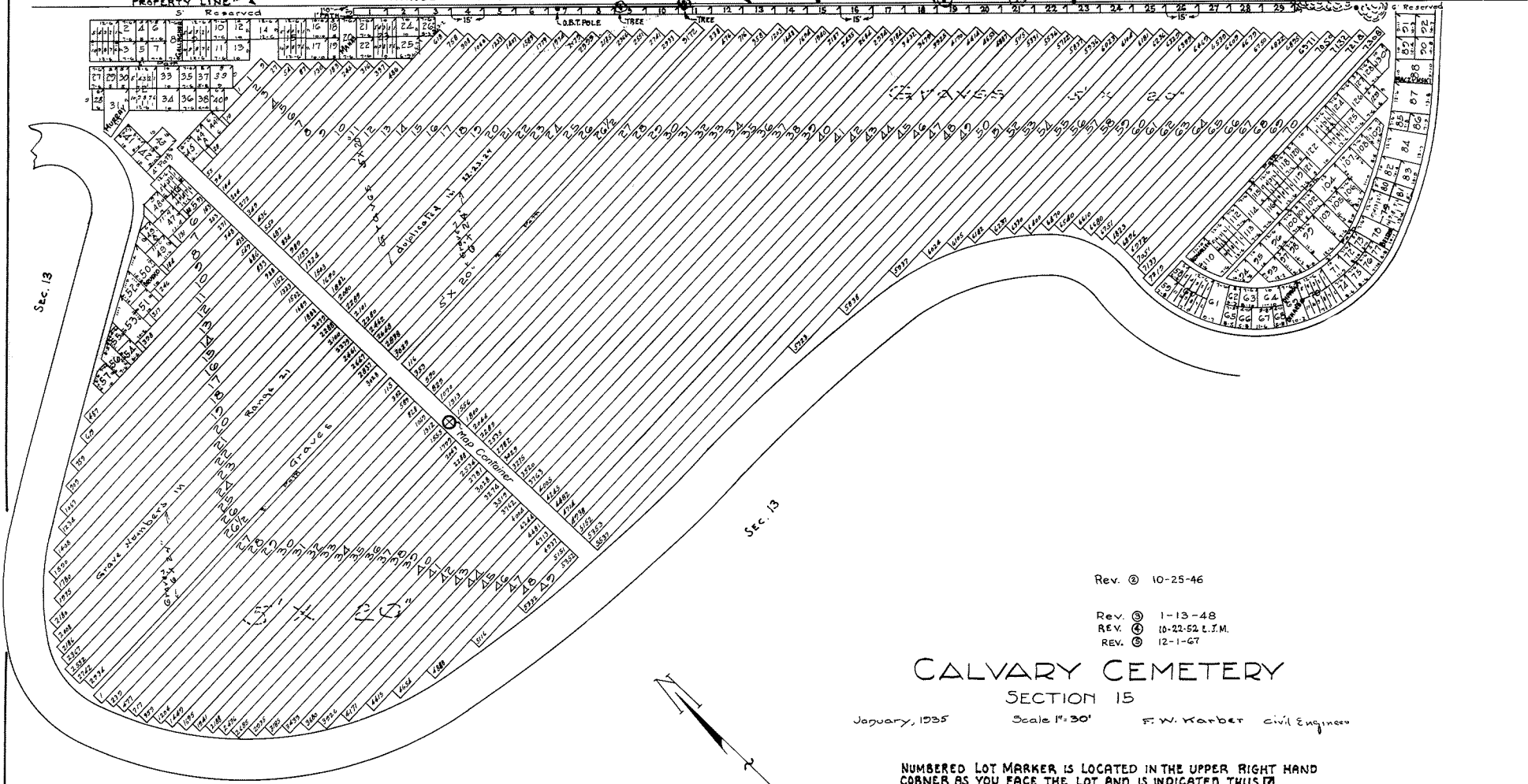


W. & L. E. R.R. R/W

RANGE 71 - LIMBS ETC. - 1 LOT = 10 GRAVES 18" x 36"

NOTE - MARKER #18 NOT PLACED BECAUSE OF TREE ROOTS



Rev. © 10-25-46

Rev. © 1-13-48  
 REV. © 10-22-52 L.J.M.  
 REV. © 12-1-67

# CALVARY CEMETERY

## SECTION 15

January, 1935 Scale 1" = 30' F. W. Karber Civil Engineer

NUMBERED LOT MARKER IS LOCATED IN THE UPPER RIGHT HAND CORNER AS YOU FACE THE LOT AND IS INDICATED THUS [M]

Lot #	Area	Graves	Lot #	Area	Graves	Lot #	Area	Graves	Lot #	Area	Graves	Lot #	Area	Graves	Lot #	Area	Graves
1	61.5	3	2	61.5	3	3	61.5	3	4	61.5	3	5	61.5	3	6	61.5	3
6	67.5	3	7	67.5	3	8	67.5	3	9	67.5	3	10	67.5	3	11	67.5	3
12	90.0	3	13	90.0	3	14	90.0	3	15	90.0	3	16	90.0	3	17	90.0	3
18	135.0	3	19	135.0	3	20	135.0	3	21	135.0	3	22	135.0	3	23	135.0	3
24	135.0	3	25	135.0	3	26	135.0	3	27	135.0	3	28	135.0	3	29	135.0	3
30	135.0	3	31	135.0	3	32	135.0	3	33	135.0	3	34	135.0	3	35	135.0	3
36	135.0	3	37	135.0	3	38	135.0	3	39	135.0	3	40	135.0	3	41	135.0	3
42	135.0	3	43	135.0	3	44	135.0	3	45	135.0	3	46	135.0	3	47	135.0	3
48	135.0	3	49	135.0	3	50	135.0	3	51	135.0	3	52	135.0	3	53	135.0	3
54	135.0	3	55	135.0	3	56	135.0	3	57	135.0	3	58	135.0	3	59	135.0	3
60	135.0	3	61	135.0	3	62	135.0	3	63	135.0	3	64	135.0	3	65	135.0	3
66	135.0	3	67	135.0	3	68	135.0	3	69	135.0	3	70	135.0	3	71	135.0	3
72	135.0	3	73	135.0	3	74	135.0	3	75	135.0	3	76	135.0	3	77	135.0	3
78	135.0	3	79	135.0	3	80	135.0	3	81	135.0	3	82	135.0	3	83	135.0	3
84	135.0	3	85	135.0	3	86	135.0	3	87	135.0	3	88	135.0	3	89	135.0	3
90	135.0	3	91	135.0	3	92	135.0	3	93	135.0	3	94	135.0	3	95	135.0	3
96	135.0	3	97	135.0	3	98	135.0	3	99	135.0	3	100	135.0	3	101	135.0	3
102	135.0	3	103	135.0	3	104	135.0	3	105	135.0	3	106	135.0	3	107	135.0	3
108	135.0	3	109	135.0	3	110	135.0	3	111	135.0	3	112	135.0	3	113	135.0	3
114	135.0	3	115	135.0	3	116	135.0	3	117	135.0	3	118	135.0	3	119	135.0	3
120	135.0	3	121	135.0	3	122	135.0	3	123	135.0	3	124	135.0	3	125	135.0	3
126	135.0	3	127	135.0	3	128	135.0	3	129	135.0	3	130	135.0	3	131	135.0	3
132	135.0	3	133	135.0	3	134	135.0	3	135	135.0	3	136	135.0	3	137	135.0	3
138	135.0	3	139	135.0	3	140	135.0	3	141	135.0	3	142	135.0	3	143	135.0	3
144	135.0	3	145	135.0	3	146	135.0	3	147	135.0	3	148	135.0	3	149	135.0	3
150	135.0	3	151	135.0	3	152	135.0	3	153	135.0	3	154	135.0	3	155	135.0	3
156	135.0	3	157	135.0	3	158	135.0	3	159	135.0	3	160	135.0	3	161	135.0	3
162	135.0	3	163	135.0	3	164	135.0	3	165	135.0	3	166	135.0	3	167	135.0	3
168	135.0	3	169	135.0	3	170	135.0	3	171	135.0	3	172	135.0	3	173	135.0	3
174	135.0	3	175	135.0	3	176	135.0	3	177	135.0	3	178	135.0	3	179	135.0	3
180	135.0	3	181	135.0	3	182	135.0	3	183	135.0	3	184	135.0	3	185	135.0	3
186	135.0	3	187	135.0	3	188	135.0	3	189	135.0	3	190	135.0	3	191	135.0	3
192	135.0	3	193	135.0	3	194	135.0	3	195	135.0	3	196	135.0	3	197	135.0	3
198	135.0	3	199	135.0	3	200	135.0	3	201	135.0	3	202	135.0	3	203	135.0	3
204	135.0	3	205	135.0	3	206	135.0	3	207	135.0	3	208	135.0	3	209	135.0	3
210	135.0	3	211	135.0	3	212	135.0	3	213	135.0	3	214	135.0	3	215	135.0	3
216	135.0	3	217	135.0	3	218	135.0	3	219	135.0	3	220	135.0	3	221	135.0	3
222	135.0	3	223	135.0	3	224	135.0	3	225	135.0	3	226	135.0	3	227	135.0	3
228	135.0	3	229	135.0	3	230	135.0	3	231	135.0	3	232	135.0	3	233	135.0	3
234	135.0	3	235	135.0	3	236	135.0	3	237	135.0	3	238	135.0	3	239	135.0	3
240	135.0	3	241	135.0	3	242	135.0	3	243	135.0	3	244	135.0	3	245	135.0	3
246	135.0	3	247	135.0	3	248	135.0	3	249	135.0	3	250	135.0	3	251	135.0	3
252	135.0	3	253	135.0	3	254	135.0	3	255	135.0	3	256	135.0	3	257	135.0	3
258	135.0	3	259	135.0	3	260	135.0	3	261	135.0	3	262	135.0	3	263	135.0	3
264	135.0	3	265	135.0	3	266	135.0	3	267	135.0	3	268	135.0	3	269	135.0	3
270	135.0	3	271	135.0	3	272	135.0	3	273	135.0	3	274	135.0	3	275	135.0	3
276	135.0	3	277	135.0	3	278	135.0	3	279	135.0	3	280	135.0	3	281	135.0	3
282	135.0	3	283	135.0	3	284	135.0	3	285	135.0	3	286	135.0	3	287	135.0	3
288	135.0	3	289	135.0	3	290	135.0	3	291	135.0	3	292	135.0	3	293	135.0	3
294	135.0	3	295	135.0	3	296	135.0	3	297	135.0	3	298	135.0	3	299	135.0	3
300	135.0	3	301	135.0	3	302	135.0	3	303	135.0	3	304	135.0	3	305	135.0	3
306	135.0	3	307	135.0	3	308	135.0	3	309	135.0	3	310	135.0	3	311	135.0	3
312	135.0	3	313	135.0	3	314	135.0	3	315	135.0	3	316	135.0	3	317	135.0	3
318	135.0	3	319	135.0	3	320	135.0	3	321	135.0	3	322	135.0	3	323	135.0	3
324	135.0	3	325	135.0	3	326	135.0	3	327	135.0	3	328	135.0	3	329	135.0	3
330	135.0	3	331	135.0	3	332	135.0	3	333	135.0	3	334	135.0	3	335	135.0	3
336	135.0	3	337	135.0	3	338	135.0	3	339	135.0	3	340	135.0	3	341	135.0	3
342	135.0	3	343	135.0	3	344	135.0	3	345	135.0	3	346	135.0	3	347	135.0	3
348	135.0	3	349	135.0	3	350	135.0	3	351	135.0	3	352	135.0	3	353	135.0	3
354	135.0	3	355	135.0	3	356	135.0	3	357	135.0	3	358	135.0	3	359	135.0	3
360	135.0	3	361	135.0	3	362	135.0	3	363	135.0	3	364	135.0	3	365	135.0	3
366	135.0	3	367	135.0	3	368	135.0	3	369	135.0	3	370	135.0	3	371	135.0	3
372	135.0	3	373	135.0	3	374	135.0	3	375	135.0	3	376	135.0	3	377	135.0	3
378	135.0	3	379	135.0	3	380	135.0	3	381	135.0	3	382	135.0	3	383	135.0	3
384	135.0	3	385	135.0	3	386	135.0	3	387	135.0	3	388	135.0	3	389	135.0	3
390	135.0	3	391	135.0	3	392	135.0	3	393	135.0	3	394	135.0	3	395	135.0	3
396	135.0	3	397	135.0	3	398	135.0	3	399	135.0	3	400	135.0	3	401	135.0	3
402	135.0	3	403	135.0	3	404	135.0	3	405	135.0	3	406	135.0	3	407	135.0	3
408	135.0	3	409	135.0	3	410	135.0	3	411	135.0	3	412	135.0	3	413	135.0	3
414	135.0																