

CALVARY CEMETERY

SECTION 30 SOUTH PART

Scale 1" = 20'
 The Wm. H. Evers Engineering Co.
 April, 1926.
 Note: Lot numbers are placed in upper right hand corner facing center.
 Rev. 6-7-20

SUMMARY
 Grave Lots: 246
 107
 18
 12
 5
 Total 376 Lots 1054 Graves
 Total area in lots = 29,900.5 Sq. Ft.

| Lot No. | Area | Graves | Lot No. | Area | Graves | Lot No. | Area | Graves | Lot No. | Area | Graves | Lot No. | Area | Graves |
|---------|-------|--------|---------|-------|--------|---------|-------|--------|---------|-------|--------|---------|------|--------|
| 415A | 54.5 | 2 | 384 | 108.1 | 4 | 415 | 61.3 | 3 | 455 | 81.4 | 3 | 500 | 54.5 | 2 |
| 416A | 55.6 | 2 | 385 | 54.5 | 2 | 416 | 62.3 | 3 | 456 | 82.1 | 3 | 501 | 61.4 | 3 |
| 417A | 57.8 | 2 | 386 | 54.5 | 2 | 417 | 63.3 | 3 | 457 | 82.8 | 3 | 502 | 62.1 | 3 |
| 418A | 57.8 | 2 | 387 | 54.5 | 2 | 418 | 64.3 | 3 | 458 | 83.2 | 3 | 503 | 54.2 | 2 |
| 419A | 59.6 | 2 | 388 | 54.5 | 2 | 419 | 65.3 | 3 | 459 | 84.5 | 3 | 504 | 54.5 | 2 |
| 420A | 60.4 | 2 | 389 | 54.5 | 2 | 420 | 66.3 | 3 | 460 | 85.4 | 3 | 505 | 54.5 | 2 |
| 421A | 61.2 | 2 | 390 | 54.5 | 2 | 421 | 67.3 | 3 | 461 | 86.3 | 3 | 506 | 54.5 | 2 |
| 422A | 62.1 | 2 | 391 | 54.5 | 2 | 422 | 68.3 | 3 | 462 | 87.1 | 3 | 507 | 54.5 | 2 |
| 423A | 63.0 | 2 | 392 | 54.5 | 2 | 423 | 69.3 | 3 | 463 | 88.1 | 3 | 508 | 54.5 | 2 |
| 424A | 64.0 | 2 | 393 | 54.5 | 2 | 424 | 70.3 | 3 | 464 | 89.1 | 3 | 509 | 54.5 | 2 |
| 425A | 65.0 | 2 | 394 | 54.5 | 2 | 425 | 71.3 | 3 | 465 | 90.1 | 3 | 510 | 54.5 | 2 |
| 426A | 66.0 | 2 | 395 | 54.5 | 2 | 426 | 72.3 | 3 | 466 | 91.1 | 3 | 511 | 54.5 | 2 |
| 427A | 67.0 | 2 | 396 | 54.5 | 2 | 427 | 73.3 | 3 | 467 | 92.1 | 3 | 512 | 54.5 | 2 |
| 428A | 68.0 | 2 | 397 | 54.5 | 2 | 428 | 74.3 | 3 | 468 | 93.1 | 3 | 513 | 54.5 | 2 |
| 429A | 69.0 | 2 | 398 | 54.5 | 2 | 429 | 75.3 | 3 | 469 | 94.1 | 3 | 514 | 54.5 | 2 |
| 430A | 70.0 | 2 | 399 | 54.5 | 2 | 430 | 76.3 | 3 | 470 | 95.1 | 3 | 515 | 54.5 | 2 |
| 431A | 71.0 | 2 | 400 | 54.5 | 2 | 431 | 77.3 | 3 | 471 | 96.1 | 3 | 516 | 54.5 | 2 |
| 432A | 72.0 | 2 | 401 | 54.5 | 2 | 432 | 78.3 | 3 | 472 | 97.1 | 3 | 517 | 54.5 | 2 |
| 433A | 73.0 | 2 | 402 | 54.5 | 2 | 433 | 79.3 | 3 | 473 | 98.1 | 3 | 518 | 54.5 | 2 |
| 434A | 74.0 | 2 | 403 | 54.5 | 2 | 434 | 80.3 | 3 | 474 | 99.1 | 3 | 519 | 54.5 | 2 |
| 435A | 75.0 | 2 | 404 | 54.5 | 2 | 435 | 81.3 | 3 | 475 | 100.1 | 3 | 520 | 54.5 | 2 |
| 436A | 76.0 | 2 | 405 | 54.5 | 2 | 436 | 82.3 | 3 | 476 | 101.1 | 3 | 521 | 54.5 | 2 |
| 437A | 77.0 | 2 | 406 | 54.5 | 2 | 437 | 83.3 | 3 | 477 | 102.1 | 3 | 522 | 54.5 | 2 |
| 438A | 78.0 | 2 | 407 | 54.5 | 2 | 438 | 84.3 | 3 | 478 | 103.1 | 3 | 523 | 54.5 | 2 |
| 439A | 79.0 | 2 | 408 | 54.5 | 2 | 439 | 85.3 | 3 | 479 | 104.1 | 3 | 524 | 54.5 | 2 |
| 440A | 80.0 | 2 | 409 | 54.5 | 2 | 440 | 86.3 | 3 | 480 | 105.1 | 3 | 525 | 54.5 | 2 |
| 441A | 81.0 | 2 | 410 | 54.5 | 2 | 441 | 87.3 | 3 | 481 | 106.1 | 3 | 526 | 54.5 | 2 |
| 442A | 82.0 | 2 | 411 | 54.5 | 2 | 442 | 88.3 | 3 | 482 | 107.1 | 3 | 527 | 54.5 | 2 |
| 443A | 83.0 | 2 | 412 | 54.5 | 2 | 443 | 89.3 | 3 | 483 | 108.1 | 3 | 528 | 54.5 | 2 |
| 444A | 84.0 | 2 | 413 | 54.5 | 2 | 444 | 90.3 | 3 | 484 | 109.1 | 3 | 529 | 54.5 | 2 |
| 445A | 85.0 | 2 | 414 | 54.5 | 2 | 445 | 91.3 | 3 | 485 | 110.1 | 3 | 530 | 54.5 | 2 |
| 446A | 86.0 | 2 | 415 | 54.5 | 2 | 446 | 92.3 | 3 | 486 | 111.1 | 3 | 531 | 54.5 | 2 |
| 447A | 87.0 | 2 | 416 | 54.5 | 2 | 447 | 93.3 | 3 | 487 | 112.1 | 3 | 532 | 54.5 | 2 |
| 448A | 88.0 | 2 | 417 | 54.5 | 2 | 448 | 94.3 | 3 | 488 | 113.1 | 3 | 533 | 54.5 | 2 |
| 449A | 89.0 | 2 | 418 | 54.5 | 2 | 449 | 95.3 | 3 | 489 | 114.1 | 3 | 534 | 54.5 | 2 |
| 450A | 90.0 | 2 | 419 | 54.5 | 2 | 450 | 96.3 | 3 | 490 | 115.1 | 3 | 535 | 54.5 | 2 |
| 451A | 91.0 | 2 | 420 | 54.5 | 2 | 451 | 97.3 | 3 | 491 | 116.1 | 3 | 536 | 54.5 | 2 |
| 452A | 92.0 | 2 | 421 | 54.5 | 2 | 452 | 98.3 | 3 | 492 | 117.1 | 3 | 537 | 54.5 | 2 |
| 453A | 93.0 | 2 | 422 | 54.5 | 2 | 453 | 99.3 | 3 | 493 | 118.1 | 3 | 538 | 54.5 | 2 |
| 454A | 94.0 | 2 | 423 | 54.5 | 2 | 454 | 100.3 | 3 | 494 | 119.1 | 3 | 539 | 54.5 | 2 |
| 455A | 95.0 | 2 | 424 | 54.5 | 2 | 455 | 101.3 | 3 | 495 | 120.1 | 3 | 540 | 54.5 | 2 |
| 456A | 96.0 | 2 | 425 | 54.5 | 2 | 456 | 102.3 | 3 | 496 | 121.1 | 3 | 541 | 54.5 | 2 |
| 457A | 97.0 | 2 | 426 | 54.5 | 2 | 457 | 103.3 | 3 | 497 | 122.1 | 3 | 542 | 54.5 | 2 |
| 458A | 98.0 | 2 | 427 | 54.5 | 2 | 458 | 104.3 | 3 | 498 | 123.1 | 3 | 543 | 54.5 | 2 |
| 459A | 99.0 | 2 | 428 | 54.5 | 2 | 459 | 105.3 | 3 | 499 | 124.1 | 3 | 544 | 54.5 | 2 |
| 460A | 100.0 | 2 | 429 | 54.5 | 2 | 460 | 106.3 | 3 | 500 | 125.1 | 3 | 545 | 54.5 | 2 |
| 461A | 101.0 | 2 | 430 | 54.5 | 2 | 461 | 107.3 | 3 | 501 | 126.1 | 3 | 546 | 54.5 | 2 |
| 462A | 102.0 | 2 | 431 | 54.5 | 2 | 462 | 108.3 | 3 | 502 | 127.1 | 3 | 547 | 54.5 | 2 |
| 463A | 103.0 | 2 | 432 | 54.5 | 2 | 463 | 109.3 | 3 | 503 | 128.1 | 3 | 548 | 54.5 | 2 |
| 464A | 104.0 | 2 | 433 | 54.5 | 2 | 464 | 110.3 | 3 | 504 | 129.1 | 3 | 549 | 54.5 | 2 |
| 465A | 105.0 | 2 | 434 | 54.5 | 2 | 465 | 111.3 | 3 | 505 | 130.1 | 3 | 550 | 54.5 | 2 |
| 466A | 106.0 | 2 | 435 | 54.5 | 2 | 466 | 112.3 | 3 | 506 | 131.1 | 3 | 551 | 54.5 | 2 |
| 467A | 107.0 | 2 | 436 | 54.5 | 2 | 467 | 113.3 | 3 | 507 | 132.1 | 3 | 552 | 54.5 | 2 |
| 468A | 108.0 | 2 | 437 | 54.5 | 2 | 468 | 114.3 | 3 | 508 | 133.1 | 3 | 553 | 54.5 | 2 |
| 469A | 109.0 | 2 | 438 | 54.5 | 2 | 469 | 115.3 | 3 | 509 | 134.1 | 3 | 554 | 54.5 | 2 |
| 470A | 110.0 | 2 | 439 | 54.5 | 2 | 470 | 116.3 | 3 | 510 | 135.1 | 3 | 555 | 54.5 | 2 |
| 471A | 111.0 | 2 | 440 | 54.5 | 2 | 471 | 117.3 | 3 | 511 | 136.1 | 3 | 556 | 54.5 | 2 |
| 472A | 112.0 | 2 | 441 | 54.5 | 2 | 472 | 118.3 | 3 | 512 | 137.1 | 3 | 557 | 54.5 | 2 |
| 473A | 113.0 | 2 | 442 | 54.5 | 2 | 473 | 119.3 | 3 | 513 | 138.1 | 3 | 558 | 54.5 | 2 |
| 474A | 114.0 | 2 | 443 | 54.5 | 2 | 474 | 120.3 | 3 | 514 | 139.1 | 3 | 559 | 54.5 | 2 |
| 475A | 115.0 | 2 | 444 | 54.5 | 2 | 475 | 121.3 | 3 | 515 | 140.1 | 3 | 560 | 54.5 | 2 |
| 476A | 116.0 | 2 | 445 | 54.5 | 2 | 476 | 122.3 | 3 | 516 | 141.1 | 3 | 561 | 54.5 | 2 |
| 477A | 117.0 | 2 | 446 | 54.5 | 2 | 477 | 123.3 | 3 | 517 | 142.1 | 3 | 562 | 54.5 | 2 |
| 478A | 118.0 | 2 | 447 | 54.5 | 2 | 478 | 124.3 | 3 | 518 | 143.1 | 3 | 563 | 54.5 | 2 |
| 479A | 119.0 | 2 | 448 | 54.5 | 2 | 479 | 125.3 | 3 | 519 | 144.1 | 3 | 564 | 54.5 | 2 |
| 480A | 120.0 | 2 | 449 | 54.5 | 2 | 480 | 126.3 | 3 | 520 | 145.1 | 3 | 565 | 54.5 | 2 |
| 481A | 121.0 | 2 | 450 | 54.5 | 2 | 481 | 127.3 | 3 | 521 | 146.1 | 3 | 566 | 54.5 | 2 |
| 482A | 122.0 | 2 | 451 | 54.5 | 2 | 482 | 128.3 | 3 | 522 | 147.1 | 3 | 567 | 54.5 | 2 |
| 483A | 123.0 | 2 | 452 | 54.5 | 2 | 483 | 129.3 | 3 | 523 | 148.1 | 3 | 568 | 54.5 | 2 |
| 484A | 124.0 | 2 | 453 | 54.5 | 2 | 484 | 130.3 | 3 | 524 | 149.1 | 3 | 569 | 54.5 | 2 |
| 485A | 125.0 | 2 | 454 | 54.5 | 2 | 485 | 131.3 | 3 | 525 | 150.1 | 3 | 570 | 54.5 | 2 |
| 486A | 126.0 | 2 | 455 | 54.5 | 2 | 486 | 132.3 | 3 | 526 | 151.1 | 3 | 571 | 54.5 | 2 |
| 487A | 127.0 | 2 | 456 | 54.5 | 2 | 487 | 133.3 | 3 | 527 | 152.1 | 3 | 572 | 54.5 | 2 |
| 488A | 128.0 | 2 | 457 | 54.5 | 2 | 488 | 134.3 | 3 | 528 | 153.1 | 3 | 573 | 54.5 | 2 |
| 489A | 129.0 | 2 | 458 | 54.5 | 2 | 489 | 135.3 | 3 | 529 | 154.1 | 3 | 574 | 54.5 | 2 |
| 490A | 130.0 | 2 | 459 | 54.5 | 2 | 490 | 136.3 | 3 | 530 | 155.1 | 3 | 575 | 54.5 | 2 |
| 491A | 131.0 | 2 | 460 | 54.5 | 2 | 491 | 137.3 | 3 | 531 | 156.1 | 3 | 576 | 54.5 | 2 |
| 492A | 132.0 | 2 | 461 | 54.5 | 2 | 492 | 138.3 | 3 | 532 | 157.1 | 3 | 577 | 54.5 | 2 |
| 493A | 133.0 | 2 | 462 | 54.5 | 2 | 493 | 139.3 | 3 | 533 | 158.1 | 3 | 578 | 54.5 | 2 |
| 494A | 134.0 | 2 | 463 | 54.5 | 2 | 494 | 140.3 | 3 | 534 | 159.1 | 3 | 579 | 54.5 | 2 |
| 495A | 135.0 | 2 | 464 | 54.5 | 2 | 495 | 141.3 | 3 | 535 | 160.1 | 3 | 580 | 54.5 | 2 |
| 496A | 136.0 | 2 | 465 | 54.5 | 2 | 496 | 142.3 | 3 | 536 | 161.1 | 3 | 581 | 54.5 | 2 |
| 497A | 137.0 | 2 | 466 | 54.5 | 2 | 497 | 143.3 | 3 | 537 | 162.1 | 3 | 582 | 54.5 | 2 |
| 498A | 138.0 | 2 | 467 | 54.5 | 2 | 498 | 144.3 | 3 | 538 | 163.1 | 3 | 583 | 54.5 | 2 |
| 499A | 139.0 | 2 | 468 | 54.5 | 2 | 499 | 145.3 | 3 | 539 | 164.1 | 3 | 584 | 54.5 | 2 |
| 500A | 140.0 | 2 | 469 | 54.5 | 2 | 500 | 146.3 | 3 | 540 | 165.1 | 3 | 585 | 54.5 | 2 |
| 501A | 141.0 | 2 | 470 | 54.5 | 2 | 501 | 147.3 | 3 | 541 | 166.1 | 3 | 586 | 54.5 | 2 |
| 502A | 142.0 | 2 | 471 | 54.5 | 2 | 502 | 148.3 | 3 | 542 | 167.1 | 3 | 587 | 54.5 | 2 |
| 503A | 143.0 | 2 | 472 | 54.5 | 2 | 503 | 149.3 | 3 | 543 | 168.1 | 3 | 588 | 54.5 | 2 |
| 504A | 144.0 | 2 | 473 | 54.5 | 2 | 504 | 150.3 | 3 | 544 | 169.1 | 3 | 589 | 54.5 | 2 |
| 505A | 145.0 | 2 | 474 | 54.5 | 2 | 505 | 151.3 | 3 | 545 | 170.1 | 3 | 590 | 54.5 | 2 |
| 506A | 146.0 | 2 | 475 | 54.5 | 2 | 506 | 152.3 | 3 | 546 | 171.1 | 3 | 591 | 54.5 | 2 |
| 507A | 147.0 | 2 | 476 | 54.5 | 2 | 507 | 153.3 | 3 | 547 | 172.1 | 3 | 592 | 54.5 | 2 |
| 508A | 148.0 | 2 | 477 | 54.5 | 2 | 508 | 154.3 | 3 | 548 | 173.1 | 3 | 593 | 54.5 | 2 |
| 509A | 149.0 | 2 | 478 | 54.5 | 2 | 509 | 155.3 | 3 | 549 | 174.1 | 3 | 594 | 54.5 | 2 |
| 510A | 150.0 | 2 | 479 | 54.5 | 2 | 510 | 156.3 | 3 | 550 | 175.1 | 3 | 595 | 54.5 | 2 |
| 511A | 151.0 | 2 | 480 | 54.5 | 2 | | | | | | | | | |



CALVARY CEMETERY
 SECTION 30
 NORTH EAST PART

Scale 1"=20'

April, 1956
 Rev. © Aug. 6, 1956

The Wm. H. Evers Engineering Co.

Note: Lot numbers are placed in upper right hand corner facing center.

SEC. 35



SEC. 31

SEC. 30 - S. PART

SEC. 30 - S. PART

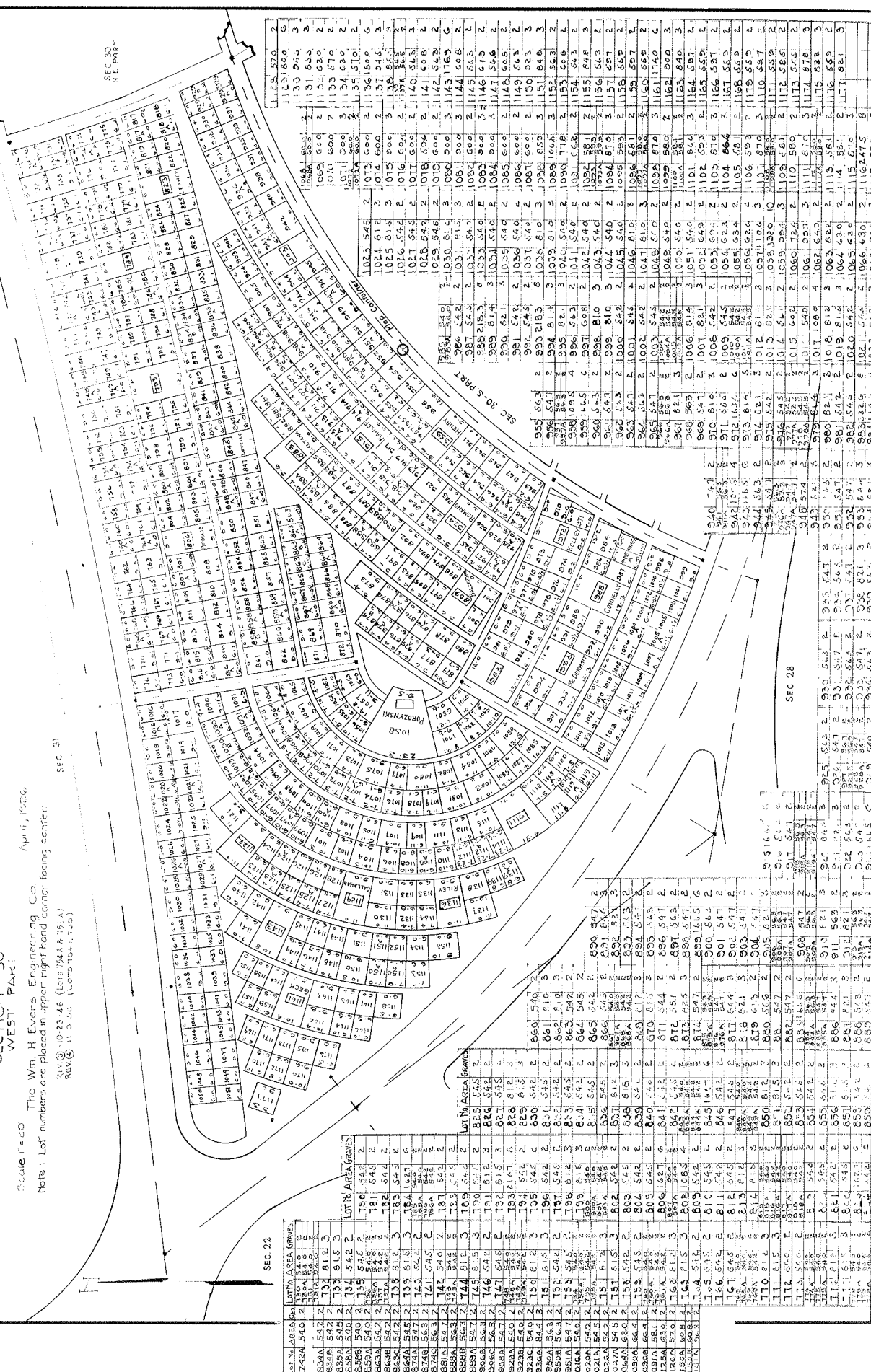
CALVARY CEMETERY

SECTION 30 WEST PART

Scale 1"=60'
 The Wm. H. Evers Engineering Co.
 April, 1926
 Notes: Lot numbers are placed in upper right hand corner facing center.
 Rev. 10-23-46 (lots 744 A 751 A)
 Rev. 11-3-56 (lots 754 755)

SEC. 31

SEC. 30
NE PART



SEC. 22

| LOT NO. | AREA | GRAVE |
|---------|-------|-------|
| 742A | 540.2 | |
| 834A | 542.2 | |
| 834B | 542.2 | |
| 835A | 545.2 | |
| 835B | 545.2 | |
| 836A | 548.2 | |
| 836B | 548.2 | |
| 837A | 551.2 | |
| 837B | 551.2 | |
| 838A | 554.2 | |
| 838B | 554.2 | |
| 839A | 557.2 | |
| 839B | 557.2 | |
| 840A | 560.2 | |
| 840B | 560.2 | |
| 841A | 563.2 | |
| 841B | 563.2 | |
| 842A | 566.2 | |
| 842B | 566.2 | |
| 843A | 569.2 | |
| 843B | 569.2 | |
| 844A | 572.2 | |
| 844B | 572.2 | |
| 845A | 575.2 | |
| 845B | 575.2 | |
| 846A | 578.2 | |
| 846B | 578.2 | |
| 847A | 581.2 | |
| 847B | 581.2 | |
| 848A | 584.2 | |
| 848B | 584.2 | |
| 849A | 587.2 | |
| 849B | 587.2 | |
| 850A | 590.2 | |
| 850B | 590.2 | |
| 851A | 593.2 | |
| 851B | 593.2 | |
| 852A | 596.2 | |
| 852B | 596.2 | |
| 853A | 599.2 | |
| 853B | 599.2 | |
| 854A | 602.2 | |
| 854B | 602.2 | |
| 855A | 605.2 | |
| 855B | 605.2 | |
| 856A | 608.2 | |
| 856B | 608.2 | |
| 857A | 611.2 | |
| 857B | 611.2 | |
| 858A | 614.2 | |
| 858B | 614.2 | |
| 859A | 617.2 | |
| 859B | 617.2 | |
| 860A | 620.2 | |
| 860B | 620.2 | |
| 861A | 623.2 | |
| 861B | 623.2 | |
| 862A | 626.2 | |
| 862B | 626.2 | |
| 863A | 629.2 | |
| 863B | 629.2 | |
| 864A | 632.2 | |
| 864B | 632.2 | |
| 865A | 635.2 | |
| 865B | 635.2 | |
| 866A | 638.2 | |
| 866B | 638.2 | |
| 867A | 641.2 | |
| 867B | 641.2 | |
| 868A | 644.2 | |
| 868B | 644.2 | |
| 869A | 647.2 | |
| 869B | 647.2 | |
| 870A | 650.2 | |
| 870B | 650.2 | |
| 871A | 653.2 | |
| 871B | 653.2 | |
| 872A | 656.2 | |
| 872B | 656.2 | |
| 873A | 659.2 | |
| 873B | 659.2 | |
| 874A | 662.2 | |
| 874B | 662.2 | |
| 875A | 665.2 | |
| 875B | 665.2 | |
| 876A | 668.2 | |
| 876B | 668.2 | |
| 877A | 671.2 | |
| 877B | 671.2 | |
| 878A | 674.2 | |
| 878B | 674.2 | |
| 879A | 677.2 | |
| 879B | 677.2 | |
| 880A | 680.2 | |
| 880B | 680.2 | |
| 881A | 683.2 | |
| 881B | 683.2 | |
| 882A | 686.2 | |
| 882B | 686.2 | |
| 883A | 689.2 | |
| 883B | 689.2 | |
| 884A | 692.2 | |
| 884B | 692.2 | |
| 885A | 695.2 | |
| 885B | 695.2 | |
| 886A | 698.2 | |
| 886B | 698.2 | |
| 887A | 701.2 | |
| 887B | 701.2 | |
| 888A | 704.2 | |
| 888B | 704.2 | |
| 889A | 707.2 | |
| 889B | 707.2 | |
| 890A | 710.2 | |
| 890B | 710.2 | |
| 891A | 713.2 | |
| 891B | 713.2 | |
| 892A | 716.2 | |
| 892B | 716.2 | |
| 893A | 719.2 | |
| 893B | 719.2 | |
| 894A | 722.2 | |
| 894B | 722.2 | |
| 895A | 725.2 | |
| 895B | 725.2 | |
| 896A | 728.2 | |
| 896B | 728.2 | |
| 897A | 731.2 | |
| 897B | 731.2 | |
| 898A | 734.2 | |
| 898B | 734.2 | |
| 899A | 737.2 | |
| 899B | 737.2 | |
| 900A | 740.2 | |
| 900B | 740.2 | |

LOT NO. AREA GRAVE

| LOT NO. | AREA | GRAVE |
|---------|-------|-------|
| 742A | 540.2 | |
| 834A | 542.2 | |
| 834B | 542.2 | |
| 835A | 545.2 | |
| 835B | 545.2 | |
| 836A | 548.2 | |
| 836B | 548.2 | |
| 837A | 551.2 | |
| 837B | 551.2 | |
| 838A | 554.2 | |
| 838B | 554.2 | |
| 839A | 557.2 | |
| 839B | 557.2 | |
| 840A | 560.2 | |
| 840B | 560.2 | |
| 841A | 563.2 | |
| 841B | 563.2 | |
| 842A | 566.2 | |
| 842B | 566.2 | |
| 843A | 569.2 | |
| 843B | 569.2 | |
| 844A | 572.2 | |
| 844B | 572.2 | |
| 845A | 575.2 | |
| 845B | 575.2 | |
| 846A | 578.2 | |
| 846B | 578.2 | |
| 847A | 581.2 | |
| 847B | 581.2 | |
| 848A | 584.2 | |
| 848B | 584.2 | |
| 849A | 587.2 | |
| 849B | 587.2 | |
| 850A | 590.2 | |
| 850B | 590.2 | |
| 851A | 593.2 | |
| 851B | 593.2 | |
| 852A | 596.2 | |
| 852B | 596.2 | |
| 853A | 599.2 | |
| 853B | 599.2 | |
| 854A | 602.2 | |
| 854B | 602.2 | |
| 855A | 605.2 | |
| 855B | 605.2 | |
| 856A | 608.2 | |
| 856B | 608.2 | |
| 857A | 611.2 | |
| 857B | 611.2 | |
| 858A | 614.2 | |
| 858B | 614.2 | |
| 859A | 617.2 | |
| 859B | 617.2 | |
| 860A | 620.2 | |
| 860B | 620.2 | |
| 861A | 623.2 | |
| 861B | 623.2 | |
| 862A | 626.2 | |
| 862B | 626.2 | |
| 863A | 629.2 | |
| 863B | 629.2 | |
| 864A | 632.2 | |
| 864B | 632.2 | |
| 865A | 635.2 | |
| 865B | 635.2 | |
| 866A | 638.2 | |
| 866B | 638.2 | |
| 867A | 641.2 | |
| 867B | 641.2 | |
| 868A | 644.2 | |
| 868B | 644.2 | |
| 869A | 647.2 | |
| 869B | 647.2 | |
| 870A | 650.2 | |
| 870B | 650.2 | |
| 871A | 653.2 | |
| 871B | 653.2 | |
| 872A | 656.2 | |
| 872B | 656.2 | |
| 873A | 659.2 | |
| 873B | 659.2 | |
| 874A | 662.2 | |
| 874B | 662.2 | |
| 875A | 665.2 | |
| 875B | 665.2 | |
| 876A | 668.2 | |
| 876B | 668.2 | |
| 877A | 671.2 | |
| 877B | 671.2 | |
| 878A | 674.2 | |
| 878B | 674.2 | |
| 879A | 677.2 | |
| 879B | 677.2 | |
| 880A | 680.2 | |
| 880B | 680.2 | |
| 881A | 683.2 | |
| 881B | 683.2 | |
| 882A | 686.2 | |
| 882B | 686.2 | |
| 883A | 689.2 | |
| 883B | 689.2 | |
| 884A | 692.2 | |
| 884B | 692.2 | |
| 885A | 695.2 | |
| 885B | 695.2 | |
| 886A | 698.2 | |
| 886B | 698.2 | |
| 887A | 701.2 | |
| 887B | 701.2 | |
| 888A | 704.2 | |
| 888B | 704.2 | |
| 889A | 707.2 | |
| 889B | 707.2 | |
| 890A | 710.2 | |
| 890B | 710.2 | |
| 891A | 713.2 | |
| 891B | 713.2 | |
| 892A | 716.2 | |
| 892B | 716.2 | |
| 893A | 719.2 | |
| 893B | 719.2 | |
| 894A | 722.2 | |
| 894B | 722.2 | |
| 895A | 725.2 | |
| 895B | 725.2 | |
| 896A | 728.2 | |
| 896B | 728.2 | |
| 897A | 731.2 | |
| 897B | 731.2 | |
| 898A | 734.2 | |
| 898B | 734.2 | |
| 899A | 737.2 | |
| 899B | 737.2 | |
| 900A | 740.2 | |
| 900B | 740.2 | |

LOT NO. AREA GRAVE

| LOT NO. | AREA | GRAVE |
|---------|-------|-------|
| 742A | 540.2 | |
| 834A | 542.2 | |
| 834B | 542.2 | |
| 835A | 545.2 | |
| 835B | 545.2 | |
| 836A | 548.2 | |
| 836B | 548.2 | |
| 837A | 551.2 | |
| 837B | 551.2 | |
| 838A | 554.2 | |
| 838B | 554.2 | |
| 839A | 557.2 | |
| 839B | 557.2 | |
| 840A | 560.2 | |
| 840B | 560.2 | |
| 841A | 563.2 | |
| 841B | 563.2 | |
| 842A | 566.2 | |
| 842B | 566.2 | |
| 843A | 569.2 | |
| 843B | 569.2 | |
| 844A | 572.2 | |
| 844B | 572.2 | |
| 845A | 575.2 | |
| 845B | 575.2 | |
| 846A | 578.2 | |
| 846B | 578.2 | |
| 847A | 581.2 | |
| 847B | 581.2 | |
| 848A | 584.2 | |
| 848B | 584.2 | |
| 849A | 587.2 | |
| 849B | 587.2 | |
| 850A | 590.2 | |
| 850B | 590.2 | |
| 851A | 593.2 | |
| 851B | 593.2 | |
| 852A | 596.2 | |
| 852B | 596.2 | |
| 853A | 599.2 | |
| 853B | 599.2 | |
| 854A | 602.2 | |
| 854B | 602.2 | |
| 855A | 605.2 | |
| 855B | 605.2 | |
| 856A | 608.2 | |
| 856B | 608.2 | |
| 857A | 611.2 | |
| 857B | 611.2 | |
| 858A | 614.2 | |
| 858B | 614.2 | |
| 859A | 617.2 | |
| 859B | 617.2 | |
| 860A | 620.2 | |
| 860B | 620.2 | |
| 861A | 623.2 | |
| 861B | 623.2 | |
| 862A | 626.2 | |
| 862B | 626.2 | |
| 863A | 629.2 | |
| 863B | 629.2 | |
| 864A | 632.2 | |
| 864B | 632.2 | |
| 865A | 635.2 | |
| 865B | 635.2 | |
| 866A | 638.2 | |
| 866B | 638.2 | |
| 867A | 641.2 | |
| 867B | 641.2 | |
| 868A | 644.2 | |
| 868B | 644.2 | |
| 869A | 647.2 | |
| 869B | 647.2 | |
| 870A | 650.2 | |
| 870B | 650.2 | |
| 871A | 653.2 | |
| 871B | 653.2 | |
| 872A | 656.2 | |
| 872B | 656.2 | |
| 873A | 659.2 | |
| 873B | 659.2 | |
| 874A | 662.2 | |
| 874B | 662.2 | |
| 875A | 665.2 | |
| 875B | 665.2 | |
| 876A | 668.2 | |
| 876B | 668.2 | |
| 877A | 671.2 | |
| 877B | 671.2 | |
| 878A | 674.2 | |
| 878B | 674.2 | |
| 879A | 677.2 | |
| 879B | 677.2 | |
| 880A | 680.2 | |
| 880B | 680.2 | |
| 881A | 683.2 | |
| 881B | 683.2 | |
| 882A | 686.2 | |
| 882B | 686.2 | |
| 883A | 689.2 | |
| 883B | 689.2 | |
| 884A | 692.2 | |
| 884B | 692.2 | |
| 885A | 695.2 | |
| 885B | 695.2 | |
| 886A | 698.2 | |
| 886B | 698.2 | |
| 887A | 701.2 | |
| 887B | 701.2 | |
| 888A | 704.2 | |
| 888B | 704.2 | |
| 889A | 707.2 | |
| 889B | 707.2 | |
| 890A | 710.2 | |
| 890B | 710.2 | |
| 891A | 713.2 | |
| 891B | 713.2 | |
| 892A | 716.2 | |
| 892B | 716.2 | |
| 893A | 719.2 | |
| 893B | 719.2 | |
| 894A | 722.2 | |
| 894B | 722.2 | |
| 895A | 725.2 | |
| 895B | 725.2 | |
| 896A | 728.2 | |
| 896B | 728.2 | |
| 897A | 731.2 | |
| 897B | 731.2 | |
| 898A | 734.2 | |
| 898B | 734.2 | |
| 899A | 737.2 | |
| 899B | 737.2 | |
| 900A | 740.2 | |
| 900B | 740.2 | |

LOT NO. AREA GRAVE

| LOT NO. | AREA | GRAVE |
|---------|-------|-------|
| 742A | 540.2 | |
| 834A | 542.2 | |
| 834B | 542.2 | |
| 835A | 545.2 | |
| 835B | 545.2 | </ |