

THE LOT NUMBER IS PLACED IN THE UPPER RIGHT HAND CORNER OF LOTS AS YOU FACE THE LOTS AND IS INDICATED THUS []

LOCATION OF GRAVE MARKERS SHOWN THUS []

ARROW INDICATES DIRECTION GRAVE MARKERS WILL FACE.

ALL LOTS ARE 2 GRAVE EXCEPT WHERE OTHERWISE NOTED

ALL 2 GRAVE LOTS ARE 3.65' WIDE

ALL 3 GRAVE LOTS ARE 5.45' WIDE

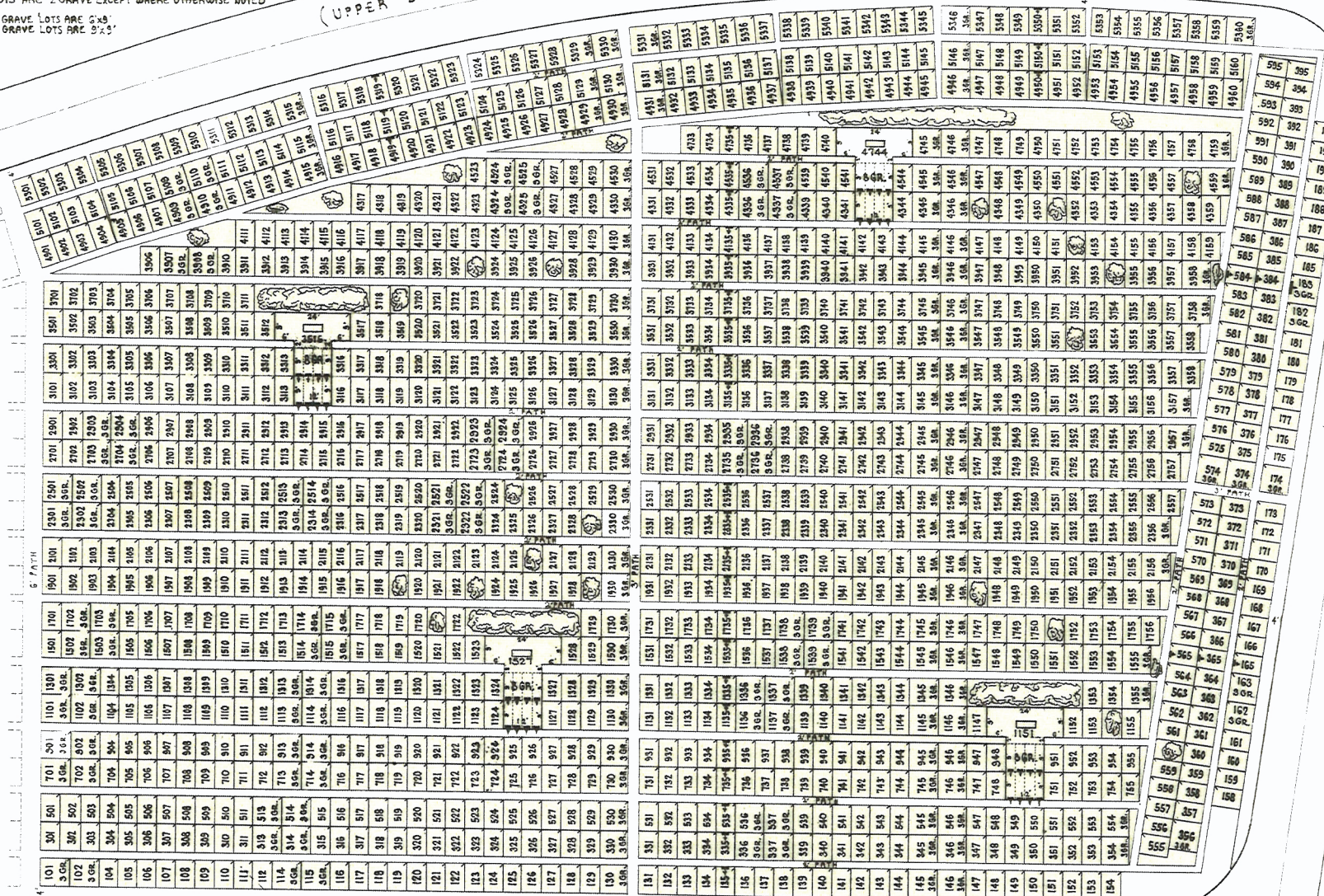
(UPPER DRIVE 24')

(LOWER DRIVE 24')

SEE WEST PART OF SEC. 86

SEC. 87

CALVARY CEMETERY
EAST PART
SECTION 86
SCALE 1"=20' E.J.M. APR. 1954

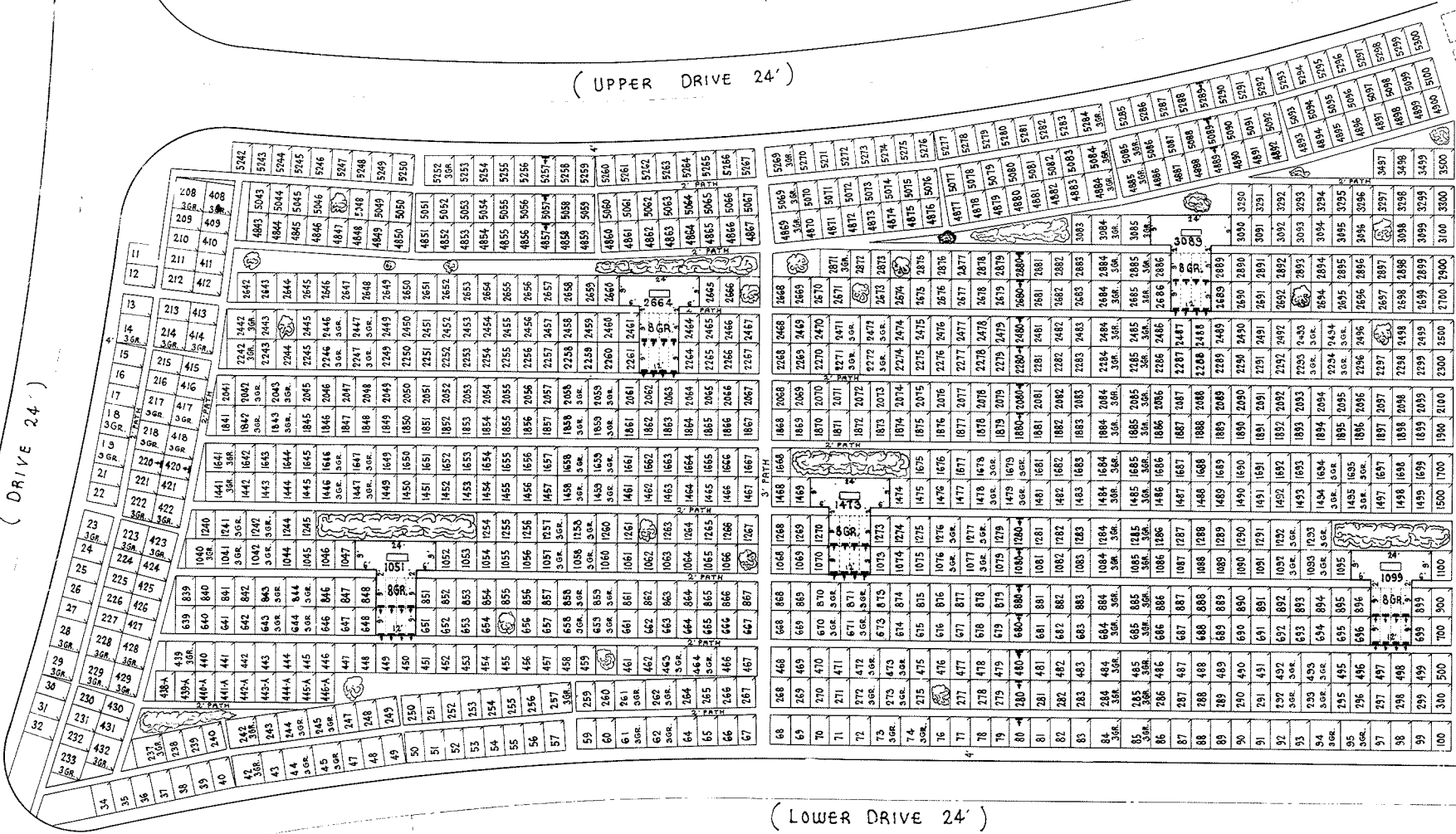


(UPPER DRIVE 24')



SEC. 84

(DRIVE 24')



SEE EAST PART OF SEC. 85

(LOWER DRIVE 24')

THE LOT NUMBER IS PLACED IN THE UPPER RIGHT HAND CORNER OF LOTS AS YOU FACE THE LOTS AND IS INDICATED THUS []

LOCATION OF GRAVE MARKERS SHOWN THUS []

ARROW INDICATES DIRECTION GRAVE MARKERS WILL FACE

ALL LOTS ARE 2 GRAVE, EXCEPT WHERE OTHERWISE NOTED

ALL 2 GRAVE LOTS ARE 6'x9'

ALL 3 GRAVE LOTS ARE 9'x9'

CALVARY CEMETERY
WEST PART
SECTION 86
 SCALE 1" = 20' E.J.M. APR. 1954

SEC. 91